



慶泰樹脂



ISO 14001



ISO 9001



國際田徑協會認證

國際網球協會認證

正字標記

環境管理認證

國家驗石獎

國際品質認證

台灣精品

國家品質獎

單液聚胺酯PU防水材

One Component Polyurethane Waterproofing Membrane

單液型聚胺酯 PU 防水材，為一組成分濕氣硬化聚胺酯 PU 防水材。硬化後形成堅韌的彈性防水塗膜，是一不滲水的最佳屏障。適合以滾輪、鏟刀等工具施工。

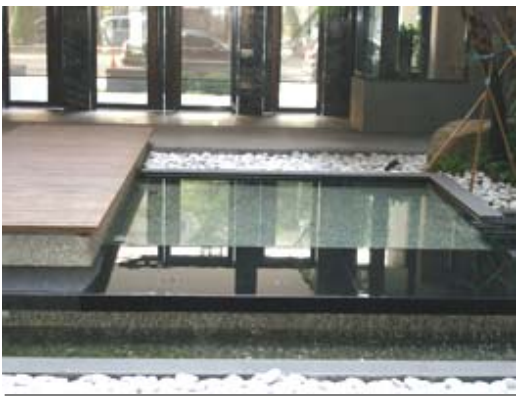
One component polyurethane waterproofing material is a moisture-cure waterproofing material. It cures to form a tough, highly elastomeric and impervious membrane. This product is suitable to apply by roller or trowel.

● 用途：Usages

- 建築外牆及地基和地下室的防水。
Waterproofing for masonry wall and basement.
- 屋頂防水及陽台防水。
Waterproofing for roof and balcony.
- 磨石磚或地磚下的夾層防水。
Waterproofing for sandwich of quarry tiles.
- 浴室和潮濕地區的夾層防水。
Waterproofing for bathroom or other humidity area.
- 植栽、花台區的防水。
Waterproofing for potted plant area.

● 產品特色：Features

- 不含煤焦油、瀝青。
Coal tar free.
- 單一成分使用方便。
One component product, easy to application.
- 耐水性及耐浸水優異。
Excellent water resistance and water immersion resistance.
- 可使用刷子、滾輪、鏟刀等工具施塗。
Can be applied by brush, roller or trowel.
- 耐老化、耐龜裂。
Excellent resistance to aging and cracking.
- 黏著特性優異。
Excellent adhesion.
- 曝露型、夾層型防水工法皆適合使用
Suitable for any types of waterproofing application.



● 性能：Physical Properties

試驗項目 Testing items	測試結果 Results
顏色 Color	綠色 Green
抗拉強度(CNS 6988) Tensile strength	20 Kgf/cm ² ↑
撕裂強度(CNS 6988) Tear strength	15 Kgf/cm ↑
蕭氏A型硬度(CNS 6988) Hardness Shore A	50 ~ 60
伸長率(CNS 6988) Elongation	600% ↑
硬化時間(CNS 10756) Curing time	24小時 24 hrs
黏度(25°C) Viscosity	10000 ~ 20000 cps

註：在25°C和相對濕度50%下，硬化七天後測試結果。

Note: Results are based on the temperature of 25°C; relative humidity is below 50% and allowed to cure for 7 days.

● 施工方法：Application

1. 新混凝土素地需經28天以上養生期，新水泥粉飾層需14天養生才可鋪設。

New concrete substrates should be cured for at least 28 days; new cement substrates should be cured for at least 14 days before application.

2. 素地表面應保持乾燥潔淨，並將裂縫、凹陷等處先以單液填縫材(CP-1007或CP-1008)封補，待一小時後即可施作下一工程。

Substrates must be clean and dry, patched all cracks or joints with One Component Sealant Material (CP-1007 or CP-1008). Allowed to dry for 1 hour prior to next application.

3. 最好以鏟刀等工具施作，施工可加入0-5%之溶劑稀釋，稀釋後應立即用畢請勿庫存。建議施作兩道以後使達到最佳防水效果。

Applied this material by trowel. This product can be diluted with 0-5% of thinner. The material should be used immediately after diluting with thinner. Two coats are recommended for an effective waterproofing membrane.

4. 單液聚胺酯PU防水材可做局部修補用，施作簡便省時省工。

One component waterproofing material can be applied to patch the partial defected area on the substrate. This product is easy to application and can minimize the application time.

5. 可上塗TC-991系列彩色彈性面漆，以達到耐候、耐UV光、耐久防護及防水美化效果。

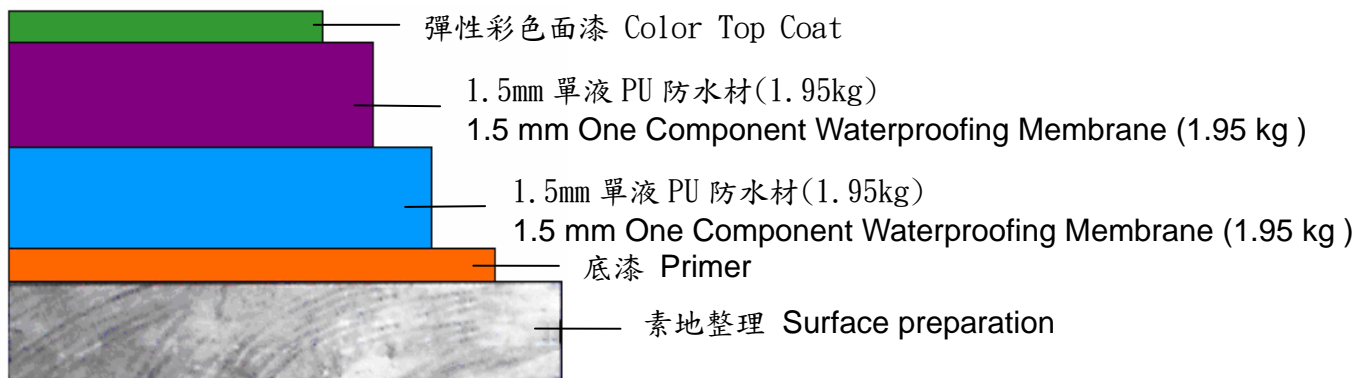
(不可上塗水性塗料)

TC-991 top coat can be applied to the membrane to Achieve the weather and UV resistance, durability and waterproofing.

(Water-based product cannot apply to this product.)



3.0 m/m 單液 PU 防水施工剖面圖 3.0 m/m PU Waterproofing Construction Profile



● 包裝：Packaging

25 kg 裝(5G 圓筒)
25 kg (5G pail).

● 注意事項：Limitation

1. 不應在潮濕、污染或粉化的水泥素地底層施工。

Do not apply on wet, contaminated or friable substrates.

2. 溫度低於5°C下，薄膜硬化速度將變慢。

The curing time will be retarded when temperature is below 5°C.

3. 一次施工不得超過2mm厚，否則可能產生氣泡鼓起。

Thickness cannot be exceeded 2mm per coat in case to prevent the blister on the surface.

4. 面層需覆蓋水泥砂漿或貼瓷磚時，須塗以界面底漆再灑上石英砂CC-50或CC-20，隔日塗膜硬化後即可施工覆蓋層。

If the surface required to cover with cement mortar or tiled, quartz sand (CC-50 or CC-20) should be broadcast into the primer. The membrane should be fully cured before next application.

5. 底漆須塗佈1-2次以確實封孔，遇鬆弛素地時需增加底漆用量，最好塗佈兩道底漆。

Two coats for the primer are recommended to ensure the substrate is completely sealed. Increase the application amount of the primer if the substrate is too loose.

6. 儲存溫度在5~30°C之間，保存期限為六個月，儘可能在低溫(25°C以下)及乾燥環境下，避免濕氣影響。

The storage temperature should be between 5~30°C. Shelf life is 6 months. Store in the cool and dry conditions (below 25°C).



● 工程實例：Reference



國立中正大學文學院
National Chung Cheng University

屋頂露台單液PU防水
For waterproofing of roofs.

酒店新館 *New hotel*

客房衛浴單液PU防水120間
For waterproofing of bathrooms.
120 rooms



素地整理打底
Surface preparation and priming



第一層防水層塗佈
the first layer of waterproofing
application



第二層防水層塗佈+撒佈骨材
the second layer of waterproofing application with granules.



慶泰樹脂化學股份有限公司
CHING-TAI RESINS CHEMICAL CO., LTD.

總公司：台中縣大甲鎮幼獅工業區工二路50號
洽詢專線：04-26816835-9 FAX:04-26811329·26811361

網 址：<http://www.chingtai-resins.com.tw/>

E - M a i l：service@chingtai-resins.com.tw

台北營業所：02-22392356 FAX：02-22392357

高雄營業所：07-7497891 FAX：07-7497893